



User Guide on Installation and Configuration of Shipit App in Shopify

Let's see, How to Install a Shipit App in Shopify and Mapping the Shipping options with the Shipit App service.

Please note before you Install the Shipit App :

You must have the Carrier-Calculated Shipping feature on your Shopify plan to connect your own Shipping carrier accounts to Shopify. This feature may not be available in your Basic Shopify plan. The Carrier-Calculated Shipping feature is included in the Shopify Advanced and Shopify Plus plans, and can be added to any plans for a monthly fee.

Where do we find the Installation Link :

You will be guided to the **Installation Link** and to **explore** more about the **Shipit App**, kindly visit our Product page given below :

The Product page Link : [Shopify-Shipit – Uniwin](#)

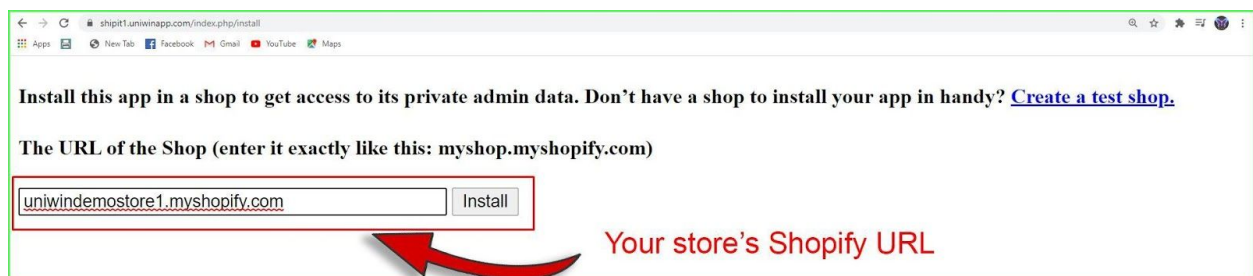
The Direct Installation Link : [SHOPIFY APP](#)

Steps to Install the Shipit App :

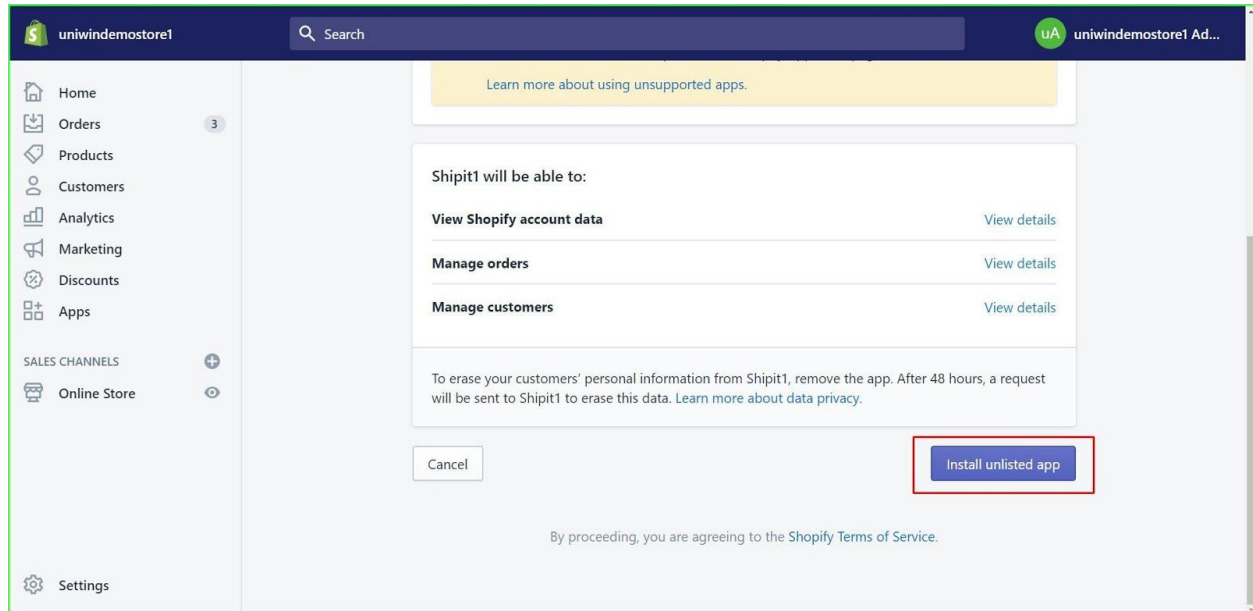
Step 1 : Go to the Product page

Step 2 : Click the Installation Link that is present on the right side of the Product Page, that says “ Install the app from “.

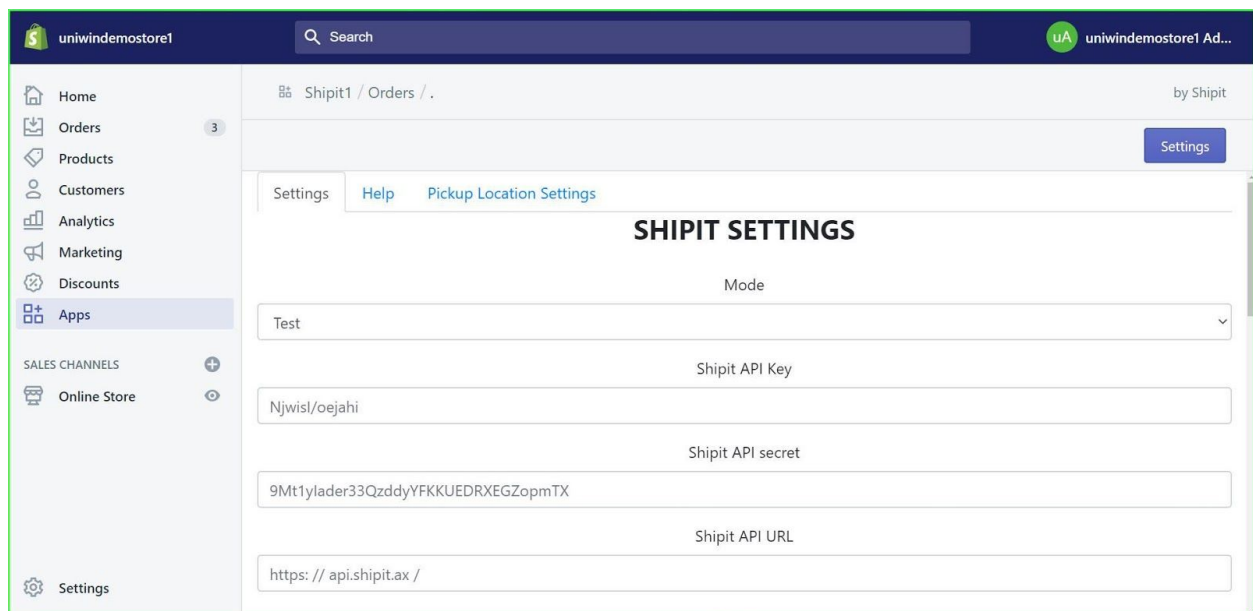
Step 3 : It will prompt for your store's **Shopify URL**, copy paste the Shopify URL **link** in the relevant space and click Install. As shown in the below screenshot.



Step 4 : The previous step will redirect you to your store, where you actually **Install** the Shipit App by clicking the **Install Button**(As shown below).



Step 5 : After the Installation step, the **SHIPIT SETTINGS** page will be displayed. Where you will have to enter the required details that have been asked(As shown in the below screenshot).



uniwindemostore1 Search uniwindemostore1 Ad...

Home Orders Products Customers Analytics Marketing Discounts Apps SALES CHANNELS Online Store Settings

Shipit1 / Orders / . by Shipit

Settings

Version

v1

Contents

Clothes

Sender name

Sender phone

With country code

Sender email

uniwindemostore1 Search uniwindemostore1 Ad...

Home Orders Products Customers Analytics Marketing Discounts Apps SALES CHANNELS Online Store Settings

Shipit1 / Orders / . by Shipit

Settings

Sender email

Sender postcode

Sender address

Sender country code

FI

Sender city

uniwindemostore1 Search uniwindemostore1 Ad...

Home Orders Products Customers Analytics Marketing Discounts Apps SALES CHANNELS Online Store Settings

Shipit1 / Orders / . by Shipit

Settings

Sender address


Sender country code

FI

Sender city

Sender vatNumber

Save



Step 6 : Once you have filled all the required fields, Click **SAVE** Button on the Shipit App(As shown in the above screenshot).

Mapping the Shipping option with the Shipping Service :

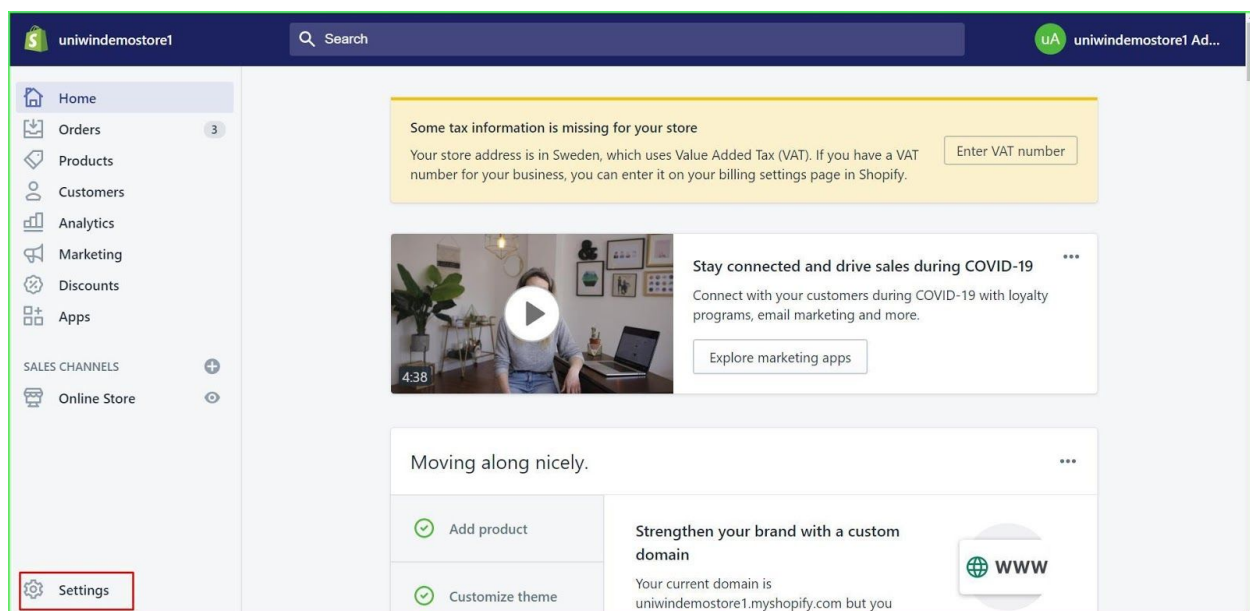
Let's see, How to **Map the Shipping option with the Shipping Service** in the **Shipit App**.

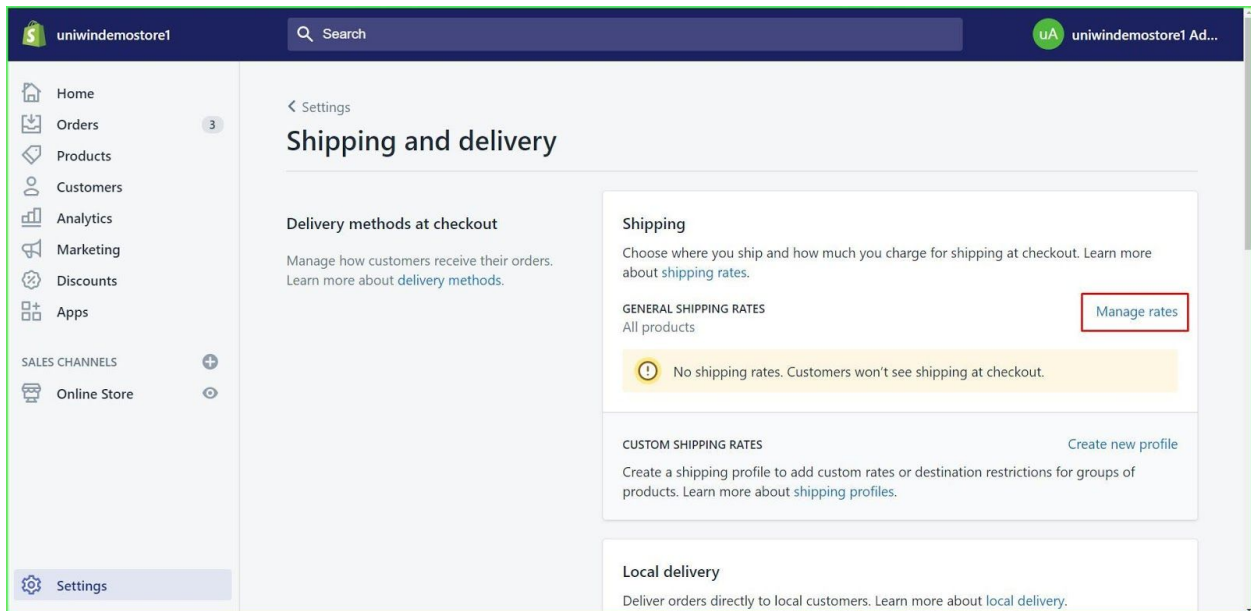
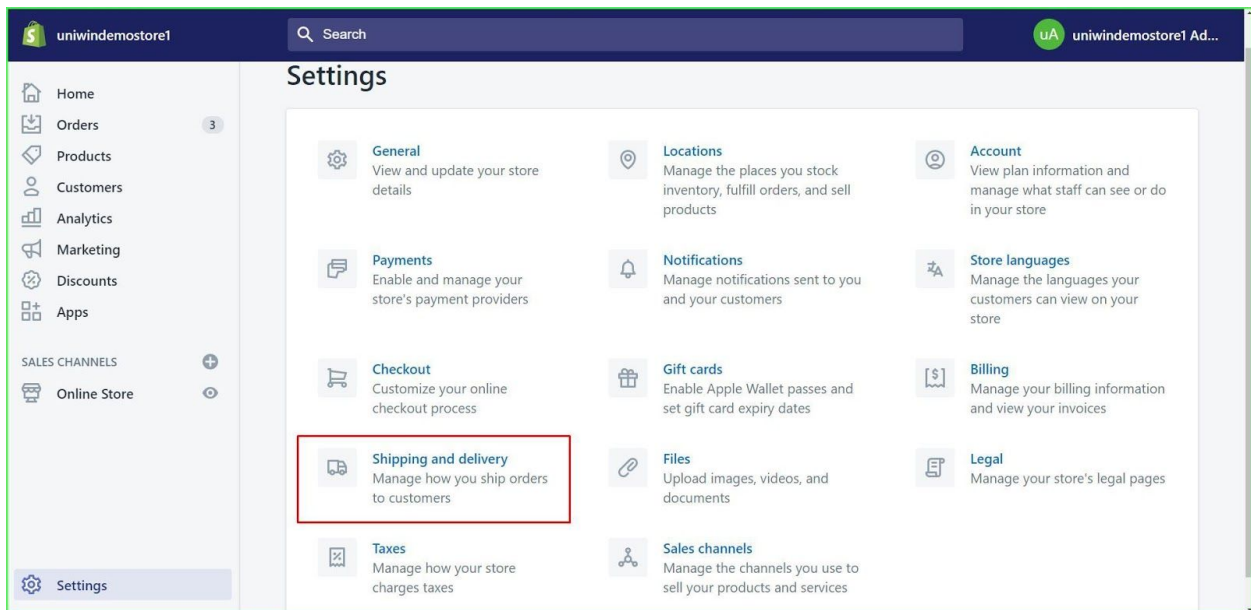
Please note before you create Mapping :

Create the Shipping option under the relevant Shipping zone.
Set the condition for **weight** or **price** where we have already created the Shipping option within the shipping profile in the Shopify.

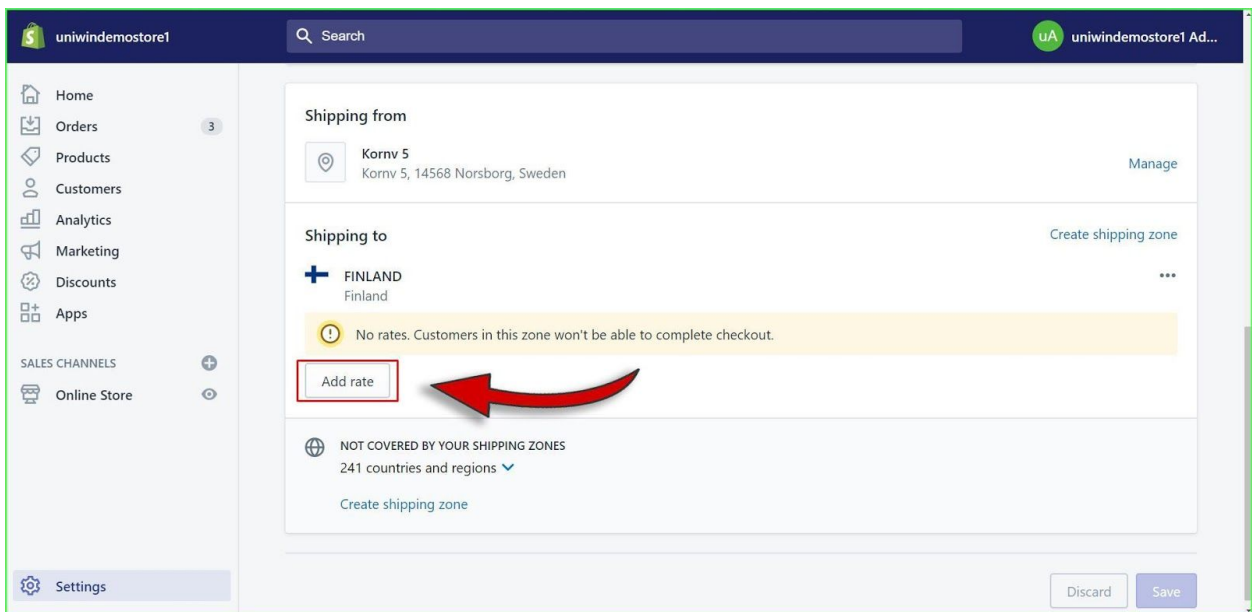
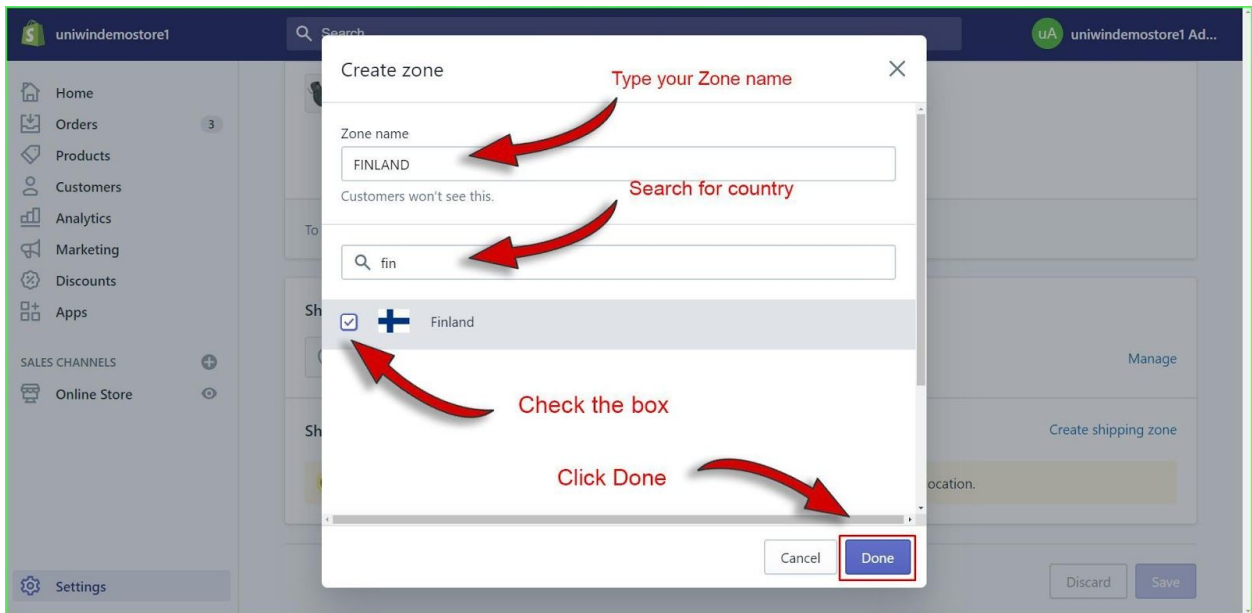
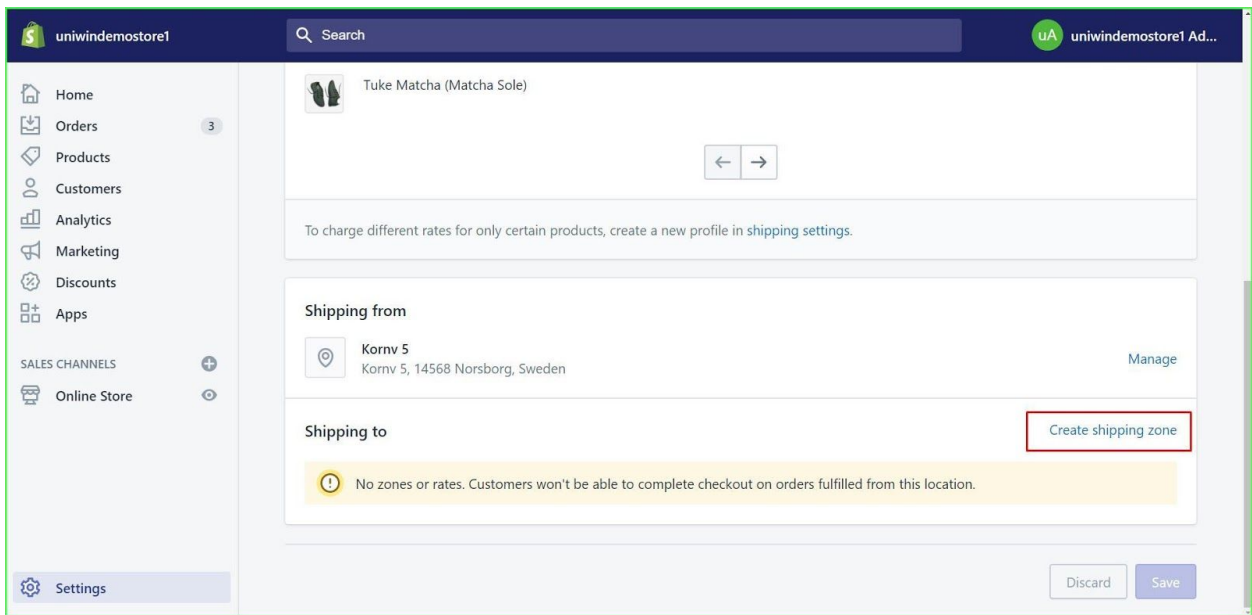
Steps to follow for Mapping the Shipping Option with the Shipping Service :

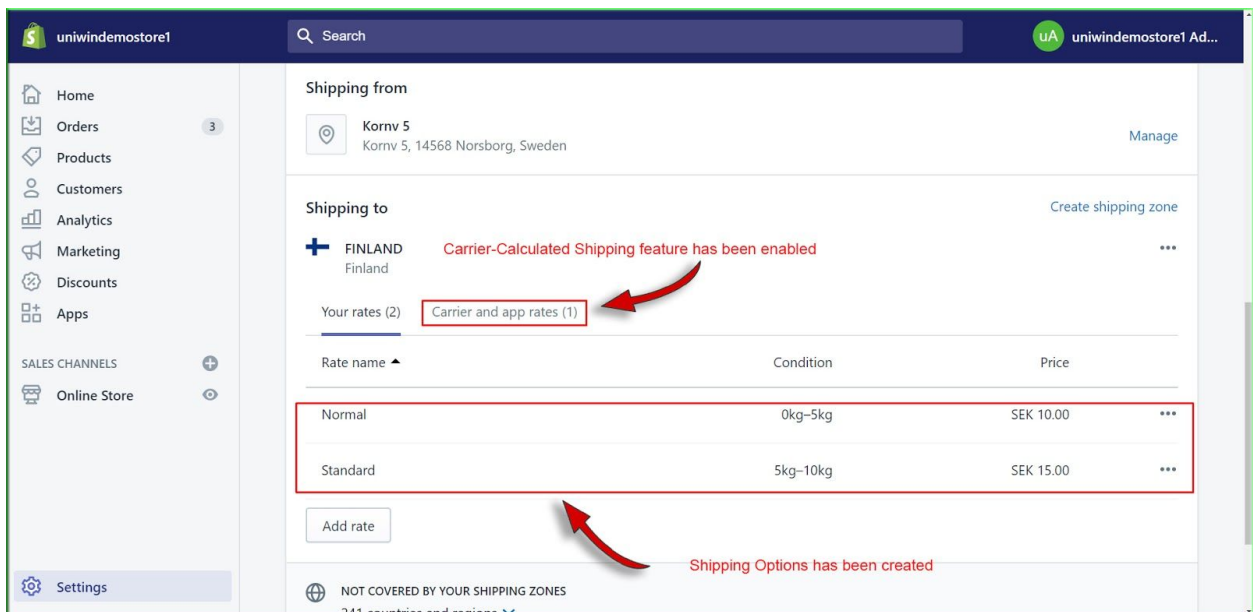
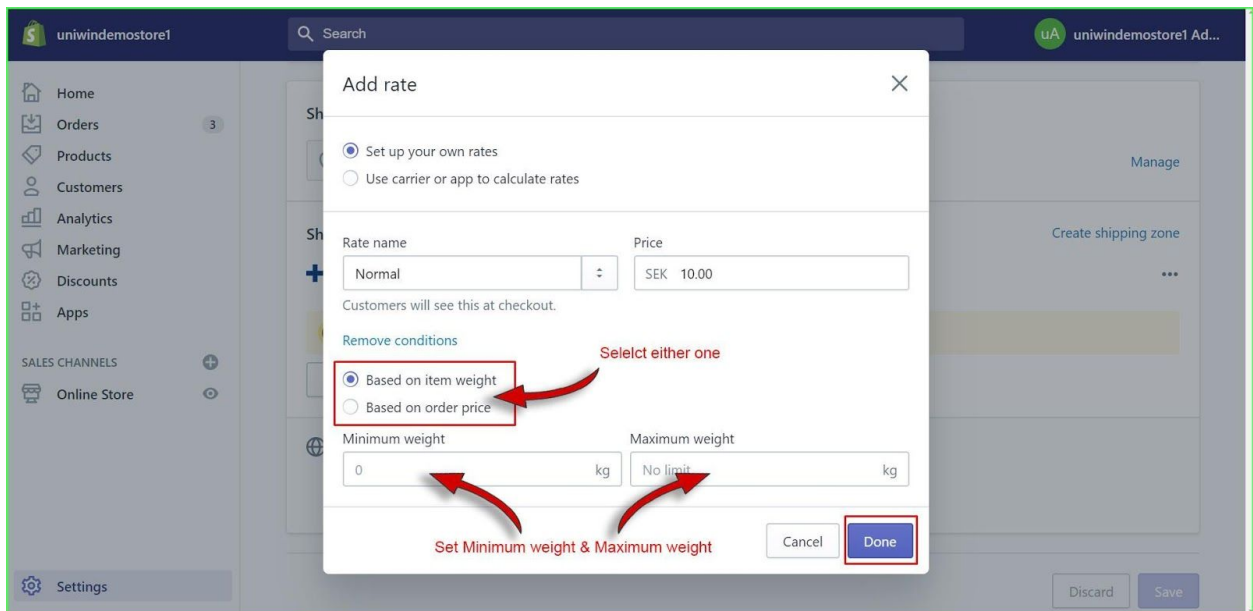
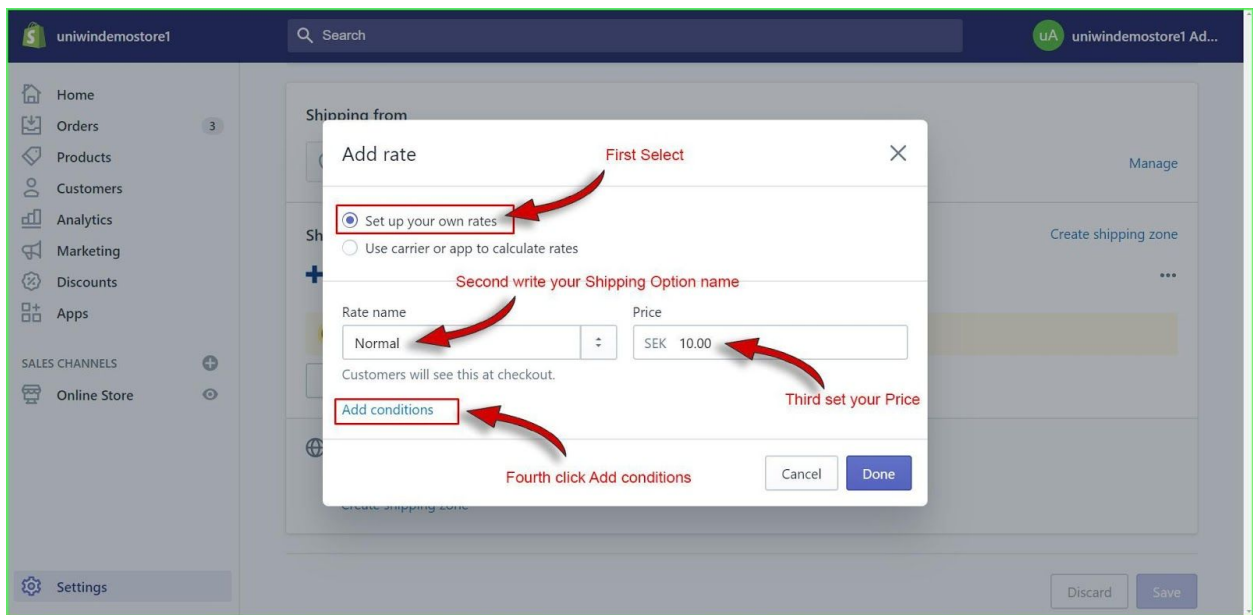
- Go to **Settings**.
- Click on the **Shipping and Delivery Option**.
- Click on the **Manage rates**.





Now you will be navigated to the relevant page, there you can create **Shipping Zone** by clicking the “**Create Shipping Zone**” button. After creating the Shipping zone, you can create the **Shipping option** under the relevant **Shipping zone** by clicking the **Add rate** button and also set the condition for Based on **Item Weight** or Based on **Order Price** by clicking the “**Add conditions**” button to the created Shipping option.





As we have discussed earlier, about the **Carrier-Calculated Shipping Feature** before the Installation steps. And mentioned that this feature will not be available in the Basic plan, rather it is included in the Shopify Advanced and Shopify Plus Plans and can be added to any plan for a monthly fee.

This **Carrier Calculated Shipping Feature** is enabled here automatically where the Shipping options are displayed that was created by you. As shown in the above screenshot.

Now the created **Shipping option** will be **available** within the **Shipit App**.

Now the **Shipping options** are created and these Shipping options will be available within the Shipit app.

Kindly follow the given step below for **Mapping**:

- Go to **Shipit App**.
- Click on the **Pickup Location Settings**.
- Select **Service**.
- Select the **Shipping Option**.
- Click **Save** Button.

Now the **Mapping** has been created as you have chosen and the **Pickup Location** will be displayed on the **checkout page**.

The screenshot displays the 'Pickup Location Settings' page in the Shipit app. The 'Service' dropdown menu is set to 'Matkahuolto - Pikapaketti' and the 'Shipping option' dropdown menu is set to 'Normal'. A blue 'Save' button is located below the dropdowns. A red box highlights the 'Mapped Services' section, which contains a table with the following data:

Service	Shipping Method	Delete
Matkahuolto - Bussipaketti	Normal	Delete
Posti - Postipaketti	Standard	Delete

Thank you. Have a great day.